

# DISCOVERING PATHS TO PROFESSIONAL OPPORTUNITIES



**Greater San Diego Science & Engineering Fair, Inc.**  
P. O. Box 120191 San Diego, CA 92112-0191  
(619) 293-2115

## OUR MISSION

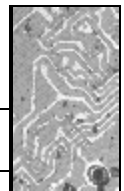
To produce and maintain a continuous process that:

- Encourages and rewards professional excellence;
- Promotes literacy and educational enrichment;
- Provides unique opportunities for independent achievement;

in science and technology for more than 12,000 seventh through twelfth grade students in all schools of San Diego and Imperial counties.

## SOME RESULTS...

A recent survey of former student winners indicated that more than 80% were in the sciences related to their science fair projects, and that 69 interviewees held doctoral degrees. Other successes include former winners who are poets, artists, theologians, prominent business professionals, and professors prominent in the physical and life sciences.



## WHO WE ARE AND WHAT WE DO!

The Greater San Diego Science & Engineering Fair is a non-profit 501(c)(3) corporation established in 1955.

Our volunteer team of dedicated people work year round to plan, organize and produce this annual event. Absolutely no one is paid for their service, but they are rewarded continuously by student excitement of individual discovery and accomplishment. The community benefits also by the growing academic excellence in the Fair's student participants, but the best benefit is that we all have a great opportunity to invest in our future by reinforcing and rewarding junior high and high school students' interest in science and technology.

Our annual budget of \$80,000 is solely dependent on private and corporate year-to-year donations of money, goods and in-kind services. Annual expenses are paid from the fair's general operating fund.

Our annual budget of \$80,000 is solely dependent on private and corporate year-to-year donations of money, goods and in-kind services. Annual expenses are paid from the fair's general operating fund.

## OUR EXPENSES INCLUDE

(but are not limited to):

- Cash and recognition awards and scholarships
- Facilitating the advancement of fair winners to state and international fairs
- Educational tours for student exhibitors
- Contracting for and operating exhibition arena and awards ceremony
- Pre-fair screening of 12,000 potential exhibitors throughout San Diego and Imperial counties.
- Recruitment and professional guidance to teachers and students via personal visits and telephone contact.
- Maintaining a network of qualified judges and advisors from pre-screening through fair judging day.
- Preparing, publishing and distributing information books, forms and registration materials

Additionally, we need volunteers. Our volunteers work 12 months of the year to produce and maintain a continuous process through science fair activity that:

- Provides a competitive arena where independent studies are evaluated for their professional excellence in scientific and technological research.
- Promotes educational enrichment and scientific literacy by requiring originality and professional format.
- Provides unique incentives for developing individual potential through encouragement, formal recognition and awards.
- Integrates virtually all educational skills into one project.
- Instills student confidence and self-esteem through independent achievement.

## FAIR CATEGORIES

**Behavioral & Social Sciences**  
**Biochemistry**  
**Chemistry**  
**Computer Sciences**  
**Earth & Space Sciences**  
**Engineering**  
**Environmental Sciences**  
**Mathematics**  
**Medicine & Health**  
**Microbiology**  
**Physics**  
**Zoology**  
**Product Testing/Consumer Sciences**  
**(Junior Division only)**



## WHAT FORMER EXHIBITORS

SAY...

*"The Fair was a tremendously exciting event for me. It encouraged me in the development of many talents."*

*"Best thing I could have done."*

*"It started my career."*

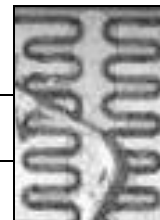
*"Great fun. Great experience."*

*"Very maturing. To think back then I didn't know what the Human Factor was, but my experience in the Fair still guides my day-to-day life. From the Science Fair to Cog Sci, I learned how to think."*

*"Mind Opening."*

## WHAT YOU CAN DO TO HELP

- Send donations to the current general operating fund
- Become or provide the name(s) of a volunteer or judge



**Mail in form and address on following page:**

**Please clip and mail  
to address below:**



Greater San Diego Science  
& Engineering Fair, Inc.  
P.O.Box 120191  
San Diego, CA 92112-0191



- \* Enclosed is my contribution toward the success of this year's fair
- \* I'm interested in making an individual contribution to the endowment fund
- \* I'm interested in making a long-term corporate/business sponsorship
- \* Please send me more information on how I can get involved in the fair by volunteering to be a:

Judge     Student Advisor     Screener     Mgmt. Committee

Name.....

Company.....

Address.....

State.....Zip.....

Telephone.....E-mail.....

*Thankyou*